

EYE SCAN XPress

NEW



Copyright 2007

MEASUREMENTS AT THE SPEED OF SIGHT

Featuring Eye Scan Gray Balance and Your Eyes



G7™ Compatible

SCANNER SPEED - DENSITOMETER PRICING

FASTER MAKE READY

Higher Quality - Higher Speeds
Less Measuring - Less Waste



FASTER TURN AROUND

Low Cost Quality Control Solution
For Any Size Multi Color Press

Gray Balance

Density

Dot Gain

Trapping

Color Match

50% BAL

Y M C K

25% 50% 75%

TRAP TRAP TRAP

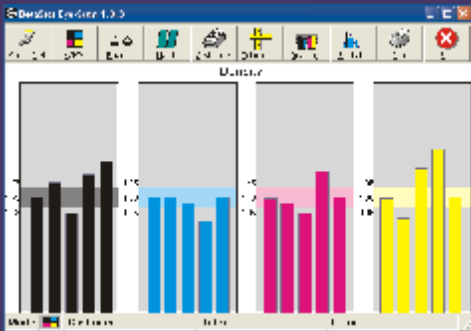




EYE SCAN XPress



DENSITY



Quick Visual Density Measurements

Breakthrough Technology

EYE SCAN SYSTEM

1. **BETA CUSTOM COLOR BAR**
For densitometer measuring of Density, Dot Gain, Trapping, and Pearl Factor, plus visual observations of Gray Balance, Slur, Resolution, Registration.

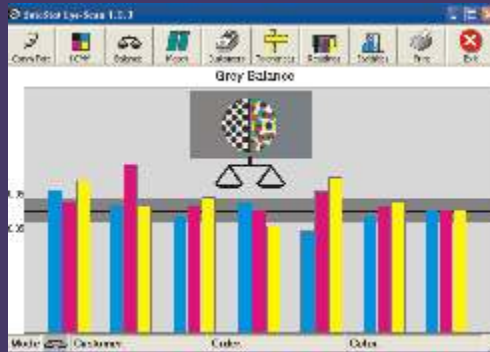
2. S4 Xpress DENSITOMETER

Flashing red / green tolerance lights for super fast, accurate measurements. The ultimate quality control densitometer.

3. BETASTAT SOFTWARE

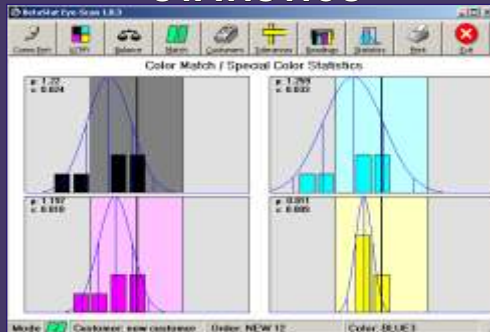
Intuitive visual program designed to enter customer data and accurately track

GRAY BALANCE



Monitor Your Press With A Glance Of Your Eyes

STATISTICS



OUT OF TOLERANCE



WITHIN TOLERANCE

Red And Green Traffic Lights Flash To Save Time & Eliminate Errors



S4 Xpress

Zero Maintenance
No Cables
No Chargers
Simple to Use
Super Fast
Accurate

Optional BETACOLOR VIEWER III

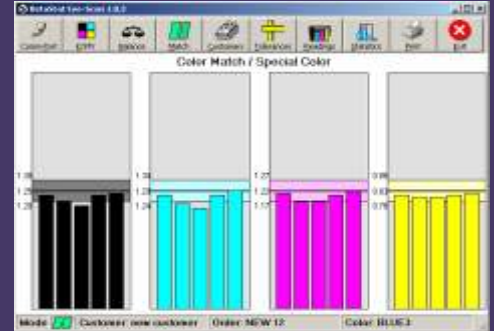


The world standard for viewing color

Copyright 2004



COLOR MATCH



Match any Pantone® or Special Color

Save Time
Save Money

GRAY BALANCE

50% BAL



Gray Balance is composed of yellow, magenta, and cyan dots or pixels. They produce a neutral gray when the press is in control. It is directly proportional to ink densities and dot/pixel gains or losses due to Slur, Doubling, Ink/Water problems, etc. A 50% black tint is placed next to a Gray Balance at every 4 ink zones for visual comparison.



BETA INDUSTRIES

The Quality Control Company

**FREE
10 DAY
TRIAL**

707 Commercial Ave. Carlstadt, NJ 07072

Tel: 201-939-2400 - 800-272-7336

Info@betascreen.com www.betascreen.com