

BETACOLOR XPRESS



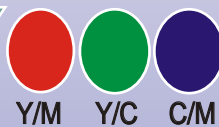
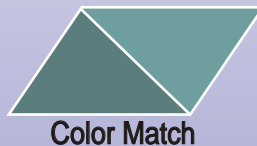
Density - Dot Gain
Dot Area - Permanent
RGB LED's

+ Gray Balance
Color Match
Trapping

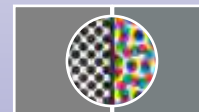
+ Spectro
7-Colors
Status T,E,I



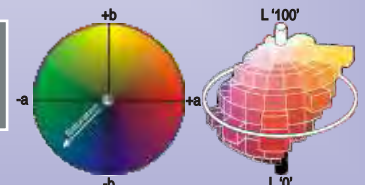
Flashing Tolerance Lights



Color Match



Gray Balance



Delta E Spectro Data

ZERO MAINTENANCE
3 YEAR WARRANTY

For G7™ & Pantone™

FREE 10 Day Trial

BETA INDUSTRIES
The Quality Control Company



707 Commercial Ave. Carlstadt, NJ 07072
Tel: 201-939-2400 - 800 272-7336
www.betascreen.com / www.betascreen.net

BETACOLOR XPRESS



FEATURES	S2 XPress	S4 XPress	S7 XPress
Flashing Red/Green LED's			
Auto Density / Dot Gain			
Auto Gray Balance			
Auto Trapping / Pearl Factor			
7 Color Recognition			
Spectro / Delta E / L*a*b / L*Ch			
Status T or Status I			
Status T, Status E, Status I			
Polarization or Non Polarization			
Polarization and Non polarization			
Apertures / 1.7mm. or 3.5mm.			
Upgradeable to S4 Xpress			

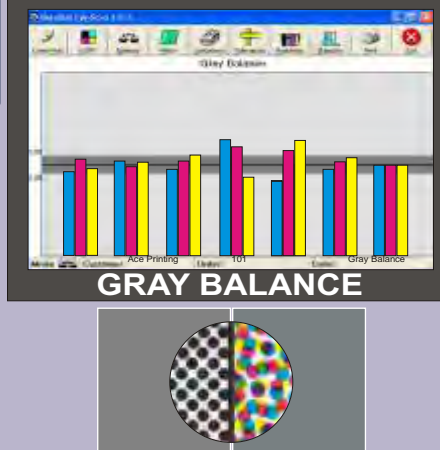
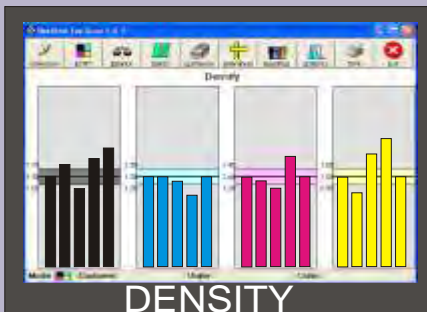
TECHNICAL SPECIFICATIONS

Density Range0.00 - 2.50
 Density Repeatability+/- 0.003
 Percent Dot Area0-100%
 Measuring Time0.1 sec.
 Linearity+/- 1%
 Light SourceMulti LED's

Measurements / Battery Set>500,000
 Power Source2-1.5V AA Alkaline Batteries
 DetectorPhotodiode
 Weight12 oz. [335 grams]
 Dimensions 6.9x3x1.9in.[175x76x47mm]
 HousingHigh impact shielded case

EYESCAN XPRESS SOFTWARE

Automatic Data Entry
Statistical Library



G7™
Match Pantone™ Colors

