

BetaFlex PRO

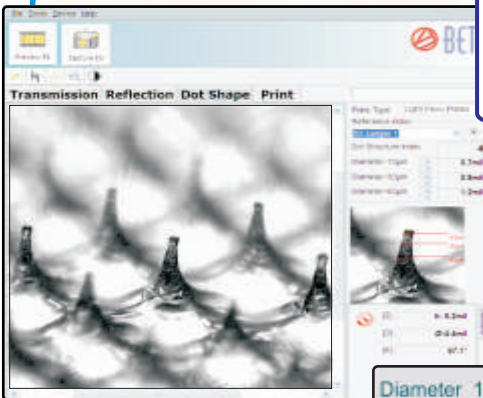
Plate & Image Analyzer

**MEASURE
HD FLEXO**

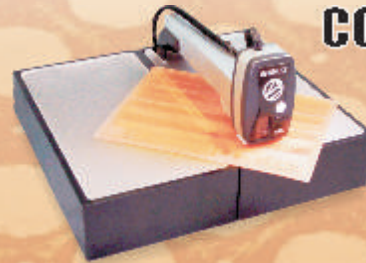
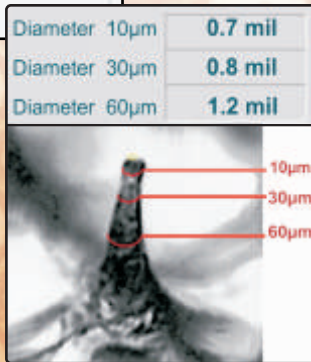
with 2D & 3D Imaging
3D Dot Structure Analysis

**COLOR SEPARATION
ANALYSIS**

**IMAGE
COMPARISON**

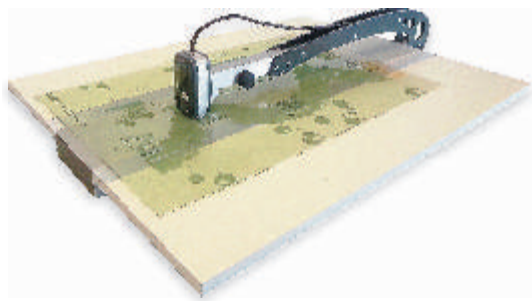


**ENLARGEMENT OF
BETAFLEX PRO
3D DOT STRUCTURE
ANALYSIS WITH
PASS/FAIL DOT
STRUCTURE INDEX**



OPTIONS & ACCESSORIES

Betaflex Pro Sleeve XXL Long Arm Adaptor*



FOR LARGE PLATES

Mounts Betaflex Pro sensor head & FlexiGage Micrometer 30 inches (762 mm) into the plate. Mask, plate and print halftone analysis as well as plate thickness and relief measurements with optional FlexiGage Micrometer.

*Available as the BetaFlex XXL Long Arm System which includes Betaflex Pro Sensor or sold separately without sensor.

MEASURE PLATES IN-THE-ROUND

Before or During Production for the Most Accurate Halftone Dot Analysis

Betaflex Pro Sleeve Adaptor*



Dual transmission illuminators produce sharp, high-contrast images for accurate halftone dot analysis

ILLUMINATION: Two collimated transmission light sources, one near each end of the sleeve support White, Red, Green, and Blue reflection light sources mounted within the sensor. 3D mode illuminator mounted within the sensor

Format: Cut off: 12" to 49" (300mm - 1250mm)

Diameter: 3.75" to 15.7" (95.5mm - 398mm)

Width: Maximum 80" (2000mm)

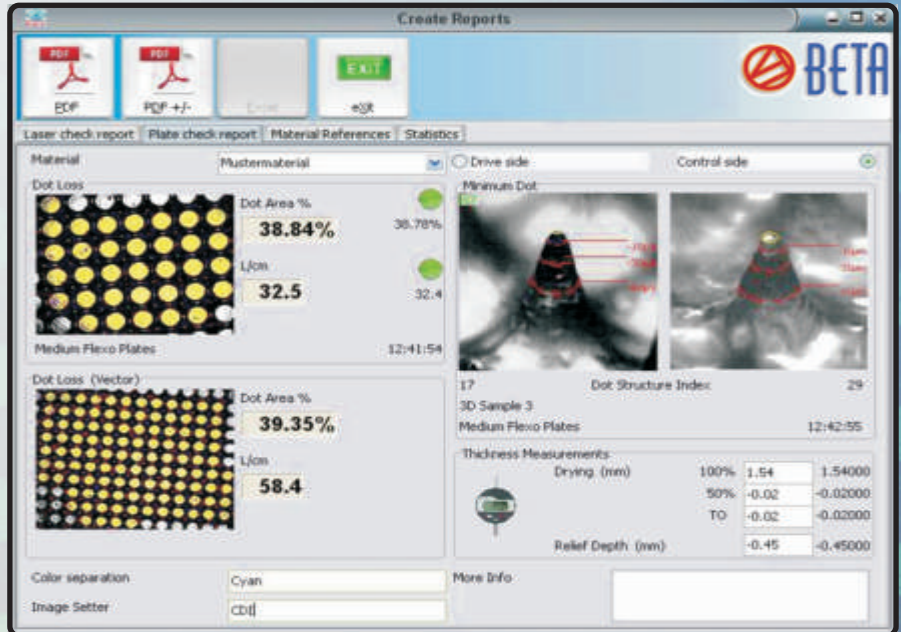
*Available as the BetaFlex Pro Sleeve Adaptor System which includes Betaflex Pro Sensor or sold separately without sensor.

ADD THE BENEFITS OF BETAFLEX PRO TO THE EFFICIENCY OF SLEEVE PRODUCTION

FlexoEyePlus Software

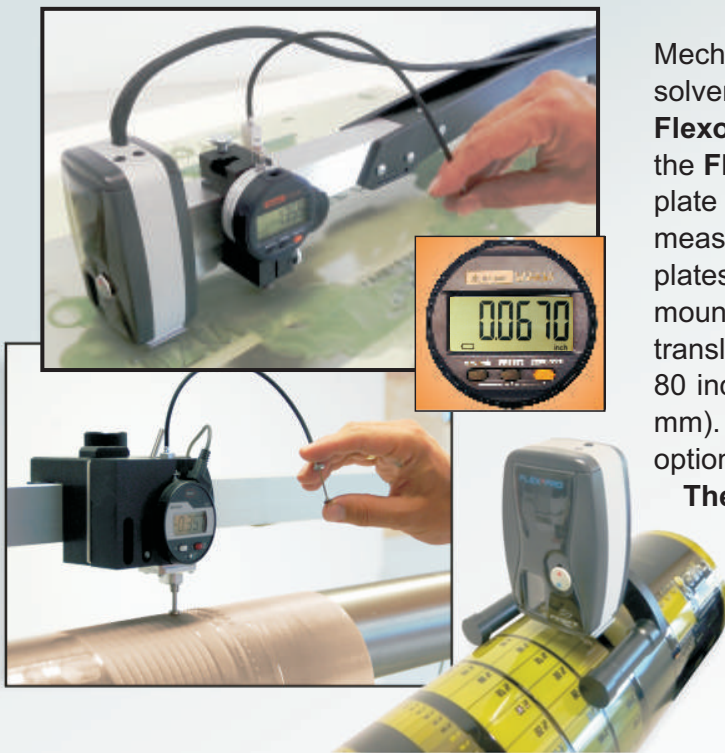
**STREAMLINED AUTOMATIC DATA
COLLECTOR & REPORT GENERATOR**

FlexoEyePlus Software
Optional software data collector & ISO report generator guides the operator to collect just the halftone data needed in a high volume production environment. **No unnecessary steps and no obstacles to high production.** Convenient **PASS/FAIL** icons evaluate minimum dot and midtone dot while plotting the day's production on a convenient graph.



FlexiGage Micrometer & Roll Mount

**MEASURE PLATE THICKNESS & WEAR
GENERATE REPORTS**



Mechanical attributes of plate gauge, relief of thermal, aqueous, solvent, and direct ablation plates can now be added to **FlexoEyePlus Software** reports through a direct connection to the **FLEXIGAGE DIGITAL MICROMETER**. Use your existing plate gauge table with our convenient Digital Micrometer to measure, record, and plot plate thickness. Not limited to flat plates, the **BetaFlex Pro** sensor (measuring head) can be mounted on the optional Betaflex Sleeve Adaptor to measure translucent sleeves in 2D and 3D mode. Handling sleeves up to 80 inches wide and 16.7 inches in diameter (2000 mm x 424 mm). Measure sleeve gauge and relief with the FlexiGage option mounted on the sleeve adaptor for total Quality Control.

The Betaflex Pro ROLL MOUNT makes it possible to document plate wear and damage while the plate is still on press. **The BetaFlex Pro Sensor (Measuring Head)** attaches to the **Roll Mount**, stabilizing the sensor on a stationary plate cylinder for 3D mode measurements. Web print samples can also be imaged on a stationary web over a turning bar or flat area on the press.

 **BETA INDUSTRIES**
The Quality Control Company

Ph: 800-272-7336, 201-939-2400
www.betascreen.net, email: sales@betascreen.com

Densitometers-Spectros, Flexo Analyzers, CTP Calibration, Color Viewing, Magnifiers, Testing Equipment