

B E T A F L E X

CONTROL UNIVERSAL

**Plate, Mask, Film,
& Print Analyzer**

Capture

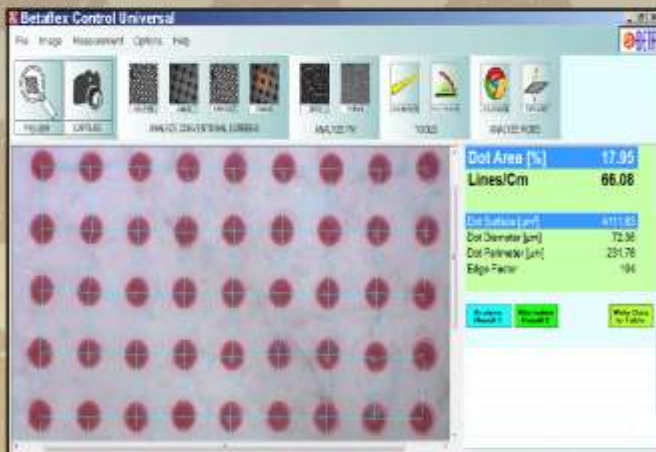
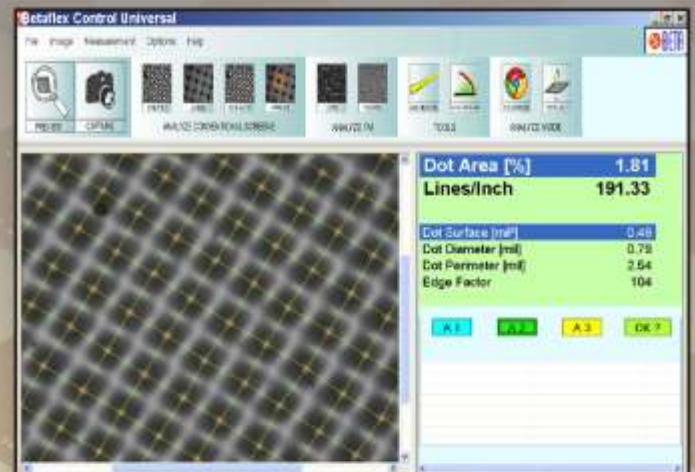
Halftones on Flexo Plates
Masks, Films, & Prints

Analyze

Dot Area, Bar Code Width
Screen Ruling, Screen Angle

Correct & Control

HALFTONES & MORE, for Better,
more Profitable Printing



**Measure AM, FM
(Stochastic) & Hybrid
Screening, Portably
on Plates & Prints
of any Size**

Betaflex Control Universal

Plate, Mask, Film, & Print Analyzer

Measure & Control

- AM/FM Stochastic
- ISO Certification
- Device Calibration with database



DotPercentArea (%)	Lines/Inch	Dot Area [µm²] Dot Area [mm²]	Dot Diameter [µm]	Dot Perimeter [µm]	EdgeFactor	Average	STD	
21.40	123.03	13.74	4.18	13.56	107			
21.74	123.03	13.96	4.21	13.66	107			
21.03	123.00	13.72	4.18	13.56	107			
						Average	STD	
						Avg.DotPercent Area	21.58	0.10
						Avg.DotLinesPerInch	125.03	0.00
						Avg.Dot Area	13.80	0.06
						Avg.Dot Diameter	4.19	0.01
						Avg.Dot Perimeter	13.60	0.03
						Avg.Dot EdgeFactor	107.00	0.00

Data Capture & Statistics



Dot Area [%]	83.00
Lines/Inch	148.14
Dot Surface [mm²]	38.80
Dot Diameter [mm]	7.03
Dot Perimeter [mm]	21.02
Edge Factor	91

Dot Area [%]	38.97
Lines/Inch	156.18
Dot Surface [mm²]	19.68
Dot Diameter [mm]	4.51
Dot Perimeter [mm]	16.51
Edge Factor	136

Dot Area [%]	1.37
Lines/Inch	157.85
Dot Surface [mm²]	0.55
Dot Diameter [mm]	0.84
Dot Perimeter [mm]	2.70
Edge Factor	104

Highlights Midtones Shadows

Portable Carrying Case
Includes All Parts



Hand Held for Plates
of any Size

FUNCTIONS

Dot Area%, Dot Diameter, Screen Ruling, Line Width, Dot Diameter, Angle, Digital zoom 4x, Bar Code width

MATERIALS

Flexo Plates, Masked Materials
Film, Printed Materials

SCREEN PATTERNS

AM, FM (Stochastic), Hybrid

INTERFACE/POWER

USB powered, Lightbox;
external 12 volt power supply

SYSTEM REQUIREMENTS

Windows 7, XP, Vista, Processor min.
1GHz, 1GB RAM, 2 USB2 ports, CD
Drive, Min. screen resolution 1024x768

SPECIAL FEATURE

Auto calibration with ISO Target

SPECIFICATIONS

Sensor: 1.3 Megapixel,
Analysis Area: 3mm², Screen Rulings:
23-85L/cm, 58-216 lpi, Lightbox with
external power supply, ISO Calibration