

B E T A F L E X

CONTROL UNIVERSAL

**Plate, Mask, Film,
& Print Analyzer**

Capture

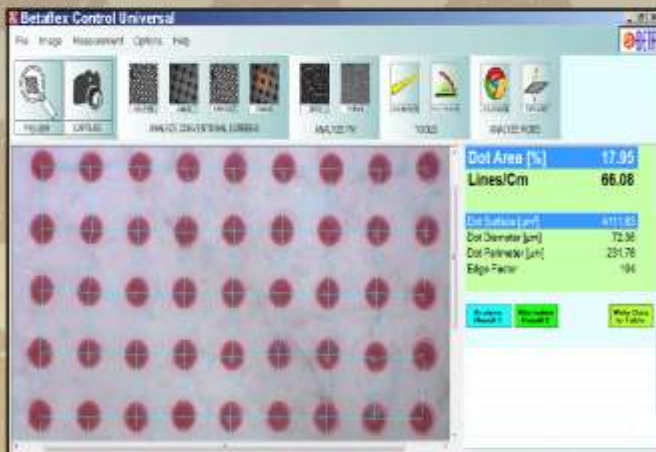
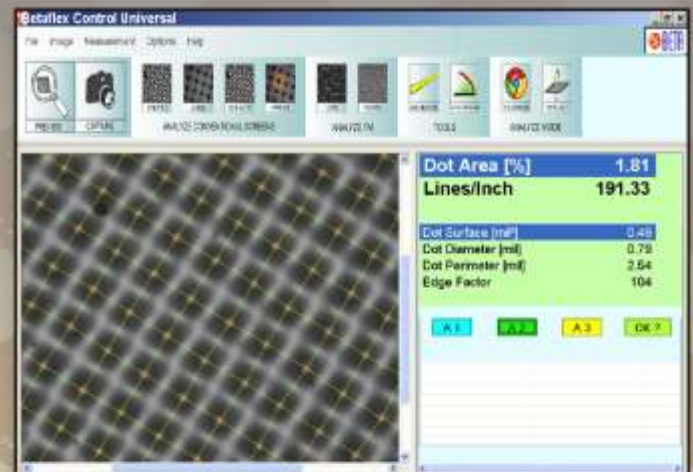
Halftones on Flexo Plates
Masks, Films, & Prints

Analyze

Dot Area, Bar Code Width
Screen Ruling, Screen Angle

Correct & Control

HALFTONES & MORE, for Better,
more Profitable Printing



**Measure AM, FM
(Stochastic) & Hybrid
Screening, Portably
on Plates & Prints
of any Size**

Betaflex Control Universal

Plate, Mask, Film, & Print Analyzer

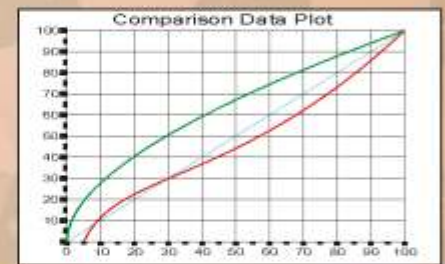


Measure & Control

- AM/FM Stochastic
- ISO Certification
- Device Calibration with database

| DotPercentArea (%) | Lines/Inch | Dot Area [µm²] Dot Area [mm²] | Dot Diameter [µm] | Dot Perimeter [µm] | EdgeFactor | Average | STD | |
|--------------------|------------|----------------------------------|-------------------|--------------------|------------|---------------------|------------|------|
| 21.40 | 123.03 | 13.74 | 4.18 | 13.56 | 107 | | | |
| 21.74 | 123.03 | 13.96 | 4.21 | 13.66 | 107 | | | |
| 21.03 | 123.00 | 13.72 | 4.18 | 13.56 | 107 | | | |
| | | | | | | Average | STD | |
| | | | | | | Avg.DotPercent Area | 21.58 | 0.10 |
| | | | | | | Avg.DotLinesPerInch | 125.03 | 0.00 |
| | | | | | | Avg.Dot Area | 13.80 | 0.06 |
| | | | | | | Avg.Dot Diameter | 4.19 | 0.01 |
| | | | | | | Avg.Dot Perimeter | 13.60 | 0.03 |
| | | | | | | Avg.Dot EdgeFactor | 107.00 | 0.00 |

Data Capture & Statistics



| | |
|--------------------|--------|
| Dot Area [%] | 83.00 |
| Lines/Inch | 148.14 |
| Dot Surface [µm²] | 38.80 |
| Dot Diameter [µm] | 7.03 |
| Dot Perimeter [µm] | 21.02 |
| Edge Factor | 91 |

| | |
|--------------------|--------|
| Dot Area [%] | 38.97 |
| Lines/Inch | 156.18 |
| Dot Surface [µm²] | 19.68 |
| Dot Diameter [µm] | 4.51 |
| Dot Perimeter [µm] | 16.51 |
| Edge Factor | 136 |

| | |
|--------------------|--------|
| Dot Area [%] | 1.37 |
| Lines/Inch | 157.85 |
| Dot Surface [µm²] | 0.55 |
| Dot Diameter [µm] | 0.84 |
| Dot Perimeter [µm] | 2.70 |
| Edge Factor | 104 |

Highlights Midtones Shadows

Portable Carrying Case
Includes All Parts



Hand Held for Plates
of any Size

FUNCTIONS

Dot Area%, Dot Diameter, Screen Ruling, Line Width, Dot Diameter, Angle, Digital zoom 4x, Bar Code width

MATERIALS

Flexo Plates, Masked Materials
Film, Printed Materials

SCREEN PATTERNS

AM, FM (Stochastic), Hybrid

INTERFACE/POWER

USB powered, Lightbox;
external 12 volt power supply

SYSTEM REQUIREMENTS

Windows 7, XP, Vista, Processor min. 1GHz, 1GB RAM, 2 USB2 ports, CD Drive, Min. screen resolution 1024x768

SPECIAL FEATURE

Auto calibration with ISO Target

SPECIFICATIONS

Sensor: 1.3 Megapixel,
Analysis Area: 3mm², Screen Rulings:
23-85L/cm, 58-216 lpi, Lightbox with
external power supply, ISO Calibration