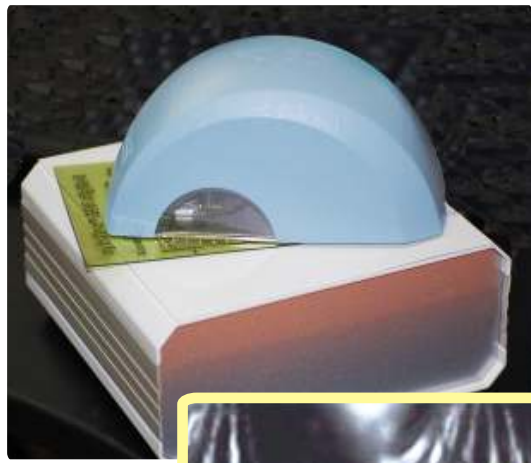


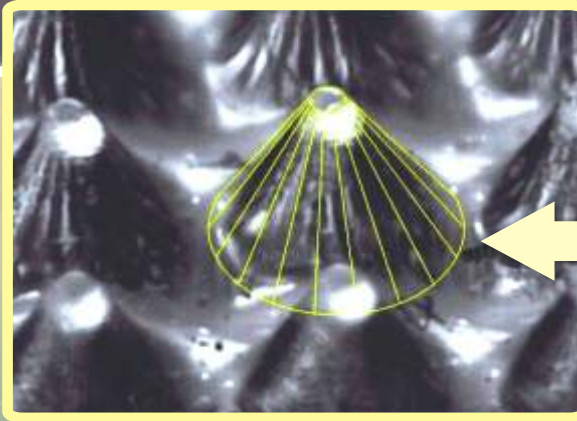
Betaflex Control 3D

3D Imaging & Measuring for HD FLEXO



Measure Plates of ANY Size

- DOT PERCENTAGE • DOT DIAMETER
- SCREEN RULING • MEASURE BAR CODES
- PRINT MEASURING • ISO DATABASE
- HAND HELD & PORTABLE



3D IMAGING with Height to Base Measurement of HD Flexo Highlight Dots

View Top & 3D Views Side-By-Side

The software interface displays two side-by-side views of a flexo dot pattern. The left view is labeled '3D VIEW' and shows a perspective view of the dots. The right view is labeled '2D TOP VIEW' and shows a top-down view of the dots. A data table on the right side of the interface provides the following measurements:

Dot Area [%]	2.46
Lines/Inch	90.61
Dot Surface [μm^2]	1935.76
Dot Diameter [μm]	49.65
Dot Perimeter [μm]	159.72
Edge Factor	105

Additional data shown at the bottom right:

Height:	774.08
Angle:	72.72
M-Length:	810.68
Top-Area:	0.0
Length:	0.0

See the 3D Dot Structure & Surface in Detail. Verify relief depth, angle shape and dot structure with high quality imaging to detect problems before you go to press!

Dot Area [%] 1.52
Lines/Inch 85.19
Dot Surface [µm] 1355.36
Dot Diameter [µm] 41.54
Dot Perimeter [µm] 133.42
Edge Factor 105

Height: 153.00
 Angle: 39.88
 M-Length: 199.68
 Top-Area: 1355.36
 Bottom-Ar: 69824.60

Data Capture & Database:

- Image with measured results
- History of Images and measurements
- Data comparison, i.e. mask to plate
- Save all data and the graph of the Data Plot Window
- Save data of ISO target measurement for certification

Single Measurement of:

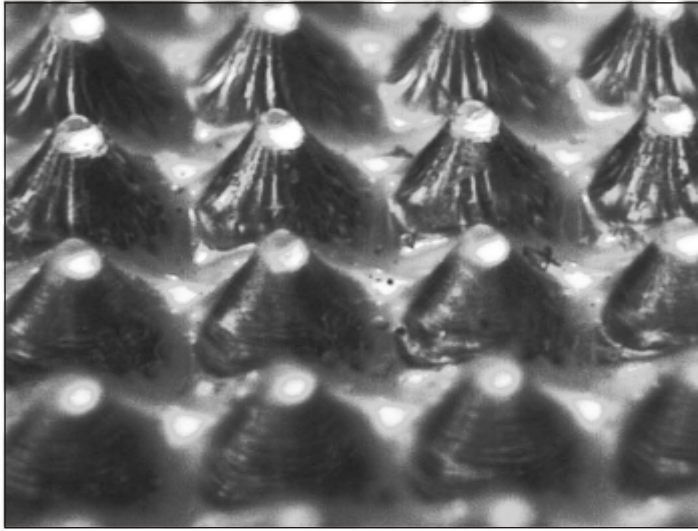
- Barcode width
- Screen ruling
- Screen angle
- Single dot size
- Adjacent groups of 4 dots

Measure	Measure % Patch	Reference	Proc. 1	Proc. 2	D_RP1	D_RP2	D_P1P2
1	0	0	2.37	0.07	0.00	0.00	0.00
2	5	2	4.44	1.90	-2.44	0.10	2.54
3	10	5	9.81	6.26	-4.81	-1.26	3.55
4	30	20	32.14	23.82	-12.14	-3.82	8.32
5	50	35	55.30	59.17	-20.30	-24.17	-3.87
6	70	55	72.20	63.39	-17.20	-8.39	8.81
7	80	65	81.79	75.17	-16.79	-10.17	6.62
8	90	80	90.85	78.84	-25.85	1.16	12.01
9	95	90	94.46	98.28	-4.46	-8.28	-3.82
10	100	100	97.97	0.00	2.03	0.00	0.00
11	0	0	0.00	0.00	0.00	0.00	0.00
12	0	0	0.00	0.00	0.00	0.00	0.00
13	0	0	0.00	0.00	0.00	0.00	0.00
14	0	0	0.00	0.00	0.00	0.00	0.00
15	0	0	0.00	0.00	0.00	0.00	0.00

Target Controlling

	Reference	Result	
<input type="radio"/> 3%	3.00	3.06	OK / Passed
<input checked="" type="radio"/> 5%	5.00	5.02	OK / Passed
<input type="radio"/> 10%	10.00	10.06	OK / Passed
<input type="radio"/> 30%	30.00	29.73	OK / Passed
<input type="radio"/> 50%	50.00	51.31	OK / Passed
<input type="radio"/> 70%	70.00	70.29	OK / Passed
<input type="radio"/> 90%	90.00	90.20	OK / Passed
<input type="radio"/> 95%	95.00	94.94	OK / Passed
<input type="radio"/> 97%	97.00	97.33	OK / Passed

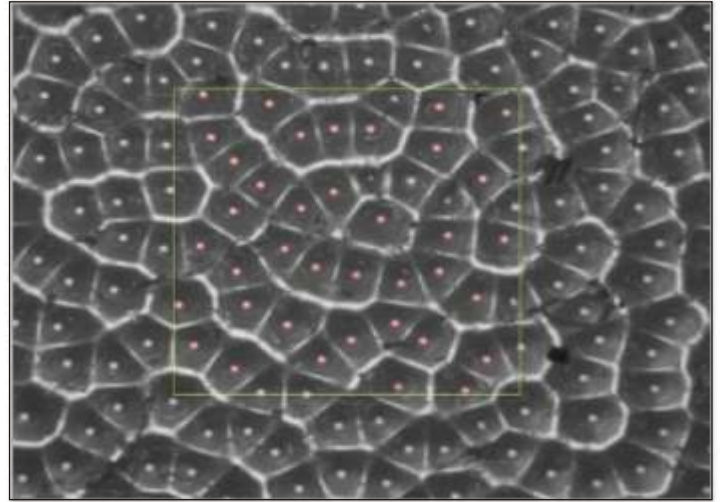
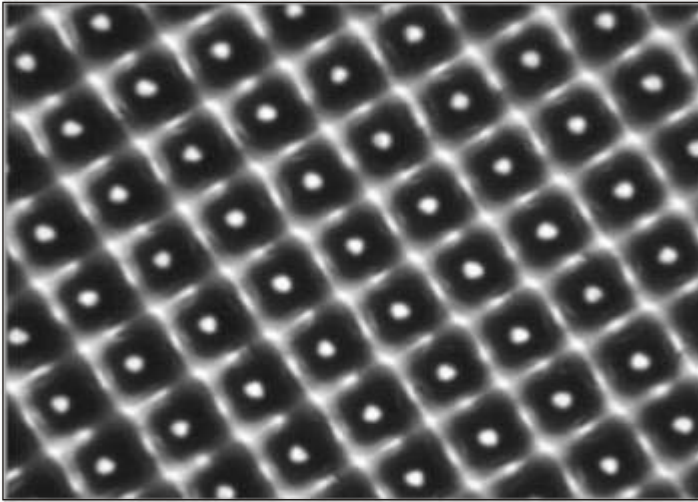
Total Target result: OK / All passed successfully!



Evaluation of a Flexo Plate 3D & Top Views

BetaFlex Control 3D Features:

- Automatically analyze all printing dots on an area of > 1 mm²
- **Measure Plates & Prints of ANY SIZE**
- Repeatability better than +/- 0.5%
- Measure all materials from 58 – 216 lpi
- Compare mask and plate results with the built in data and graph analyzer
- Automatic Analysis of AM and FM plates
- Meet highest quality requirements with ISO target and auto calibration system



Automatically Capture and Analyze Areas in AM and FM

Functions

3D Imaging, Dot Area%, Dot Diameter, Screen Ruling, Line Width, (display inch or mm), Dot Diameter, Angle, Digital zoom 4x, Bar Code width

Materials

Flexo Plates
Masked Materials
Film, Print Imaging

Screen Patterns

AM
FM (Stochastic)
Hybrid

Min. System Requirements*

Windows 7 Pro (64-bit), Windows 8 Pro License, Processor min. 8GB DDR3-1333 SDRAM, 750GB 7,200RPM Hard Drive, 2 USB2 ports, CD/DVD Drive
*Complete Turnkey System Available

Parts Included

Plate reader with USB cable
Software with Dongle
ISO Calibration target
USB powered Lightbox

Interface/Power

USB powered Plate Reader, USB powered Lightbox

Special Feature

Auto calibration with ISO Target

Specifications

Sensor: 1.3 Megapixel
Analysis Area: 3mm²
Screen Rulings: 23-85L/cm, 58-216 lpi, USB Powered Lightbox, ISO Calibration target