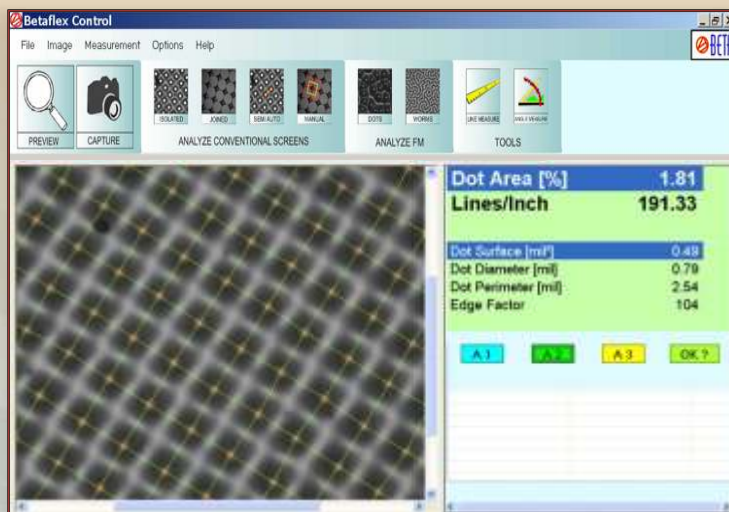


B E T A F L E X

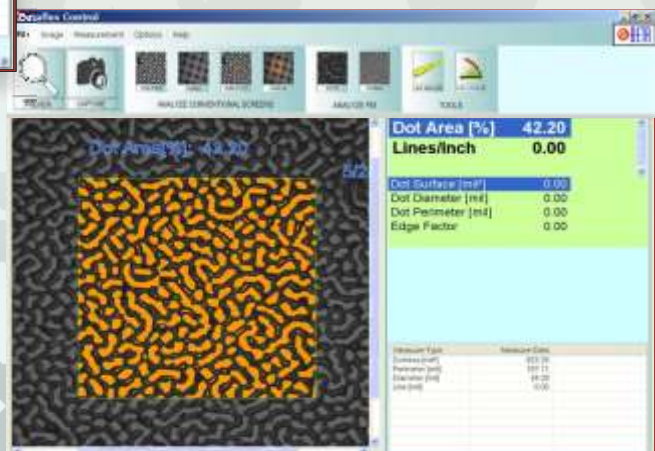
CONTROL



- **Capture**
Halftones on Flexo Plates,
Masks & Film
- **Analyze**
Dot Area, Bar Code Width
Screen Ruling, Screen Angle
- **Correct & Control**
Halftones & more, for better,
more Profitable Printing



**Measure AM, FM
(Stochastic)
& Hybrid Screening,
Portably on
Plates of Any Size**



**Hand Held Flexo
Plate, Mask,
& Film Analyzer
in One Easy Device**

Betaflex Control

Measure & Control AM/FM
Stochastic, ISO Certification,
Device Calibration with database

DotPercentArea [%]	Lines/inch Lines/inch	Dot Area [µm²] Dot Area [µm²]	Dot Diameter [µm]	Dot Perimeter [µm]	EdgeFactor
21.48	125.03	13.74	4.18	13.55	107
21.74	125.03	13.90	4.21	13.65	107
21.50	125.03	13.77	4.19	13.58	107

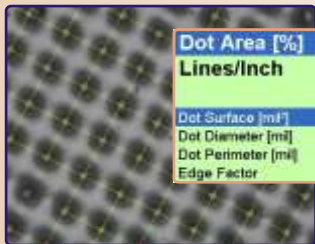
Data Capture & Statistics

Datatype	Average	STD
Avg.DotPercent Area	21.58	0.10
Avg.DotLinesPerInch	125.03	0.00
Avg.Dot Area	13.80	0.06
Avg.Dot Diameter	4.19	0.01
Avg.Dot Perimeter	13.60	0.03
Avg.Dot EdgeFactor	107.00	0.00



Tone Reproduction Curve

Capture, Analyze, Correct



Dot Area [%]	1.37
Lines/Inch	157.85
Dot Surface [µm²]	0.55
Dot Diameter [µm]	0.84
Dot Perimeter [µm]	2.70
Edge Factor	106

Highlights



Dot Area [%]	38.97
Lines/Inch	156.18
Dot Surface [µm²]	15.08
Dot Diameter [µm]	4.51
Dot Perimeter [µm]	16.51
Edge Factor	138

Midtones



Dot Area [%]	83.00
Lines/Inch	146.14
Dot Surface [µm²]	36.88
Dot Diameter [µm]	7.03
Dot Perimeter [µm]	21.02
Edge Factor	90

Shadows

Functions

Dot Area%, Dot Diameter, Screen Ruling, Line Width, (display inch or mm), Dot Diameter, Angle, Digital zoom 4x, Bar Code width

Materials

Flexo Plates
Masked Materials
Film

Screen Patterns

AM
FM (Stochastic)
Hybrid

System Requirements

Windows 7, XP, Vista,
Processor min. 1GHz, 1GB RAM
2 USB2 ports, CD Drive
Min. screen resolution 1024x768

Parts Included

Plate reader with USB cable,
Software, Dongle, ISO Calibration target, Lightbox with 12 volt power supply

Interface/Power

USB powered,
Lightbox; external
12 volt power supply

Special Feature

Auto calibration
with ISO Target

Specifications

Sensor: 1.3 MB
Analysis Area: 3mm²
Screen Rulings: 23-85L/cm
58-216 lpi, Lightbox with external



Measure a Variety of Different Plate Types



Portable Carrying Case
Includes All Parts



Hand Held for Plates of Any Size